



SET-UPS &  
CAPACITIES

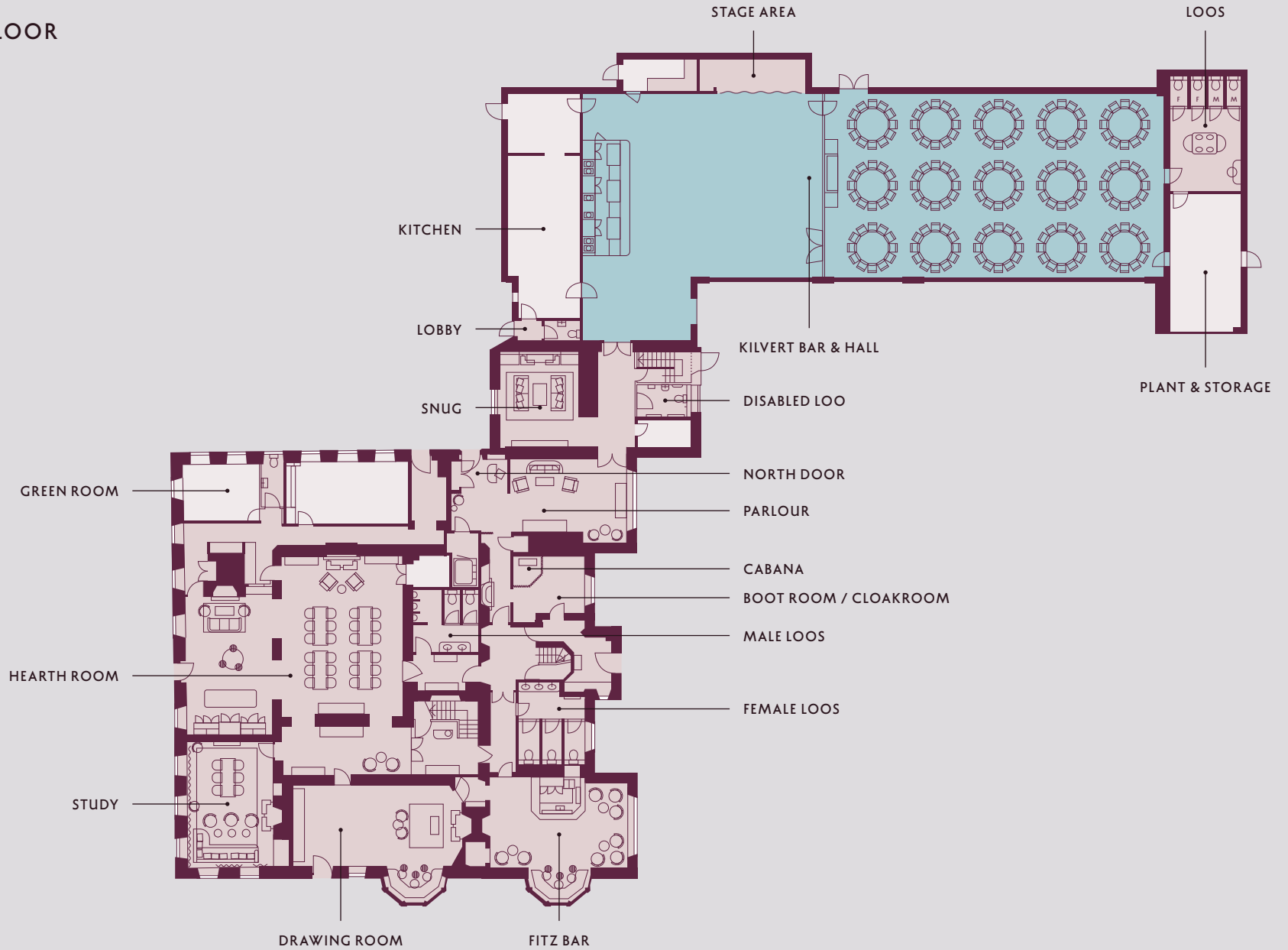
KIN HOUSE

HOUSE & GROUNDS



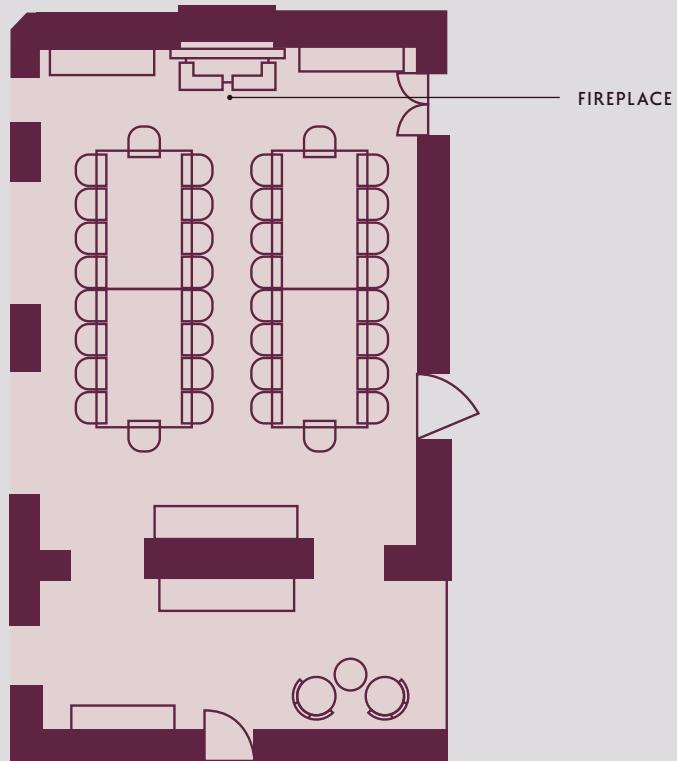
KIN HOUSE

GROUND FLOOR



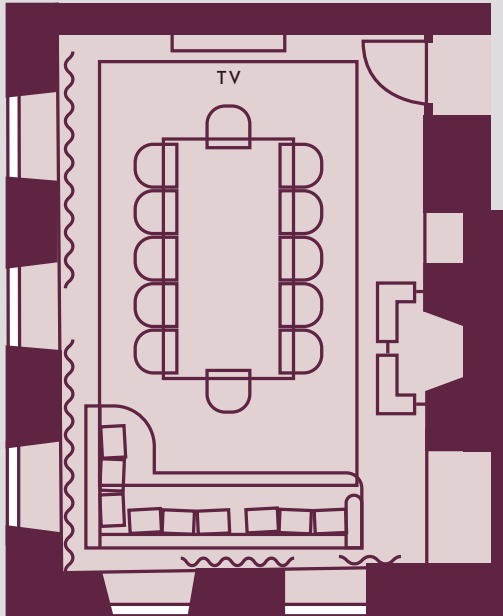
KIN HOUSE

HEARTH ROOM

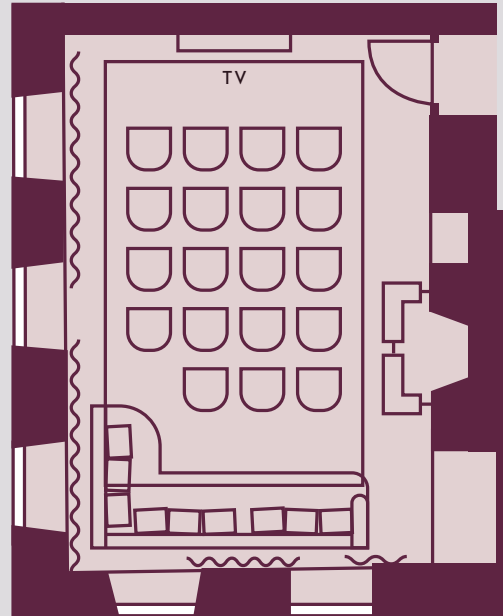


36 SEATED

THE STUDY



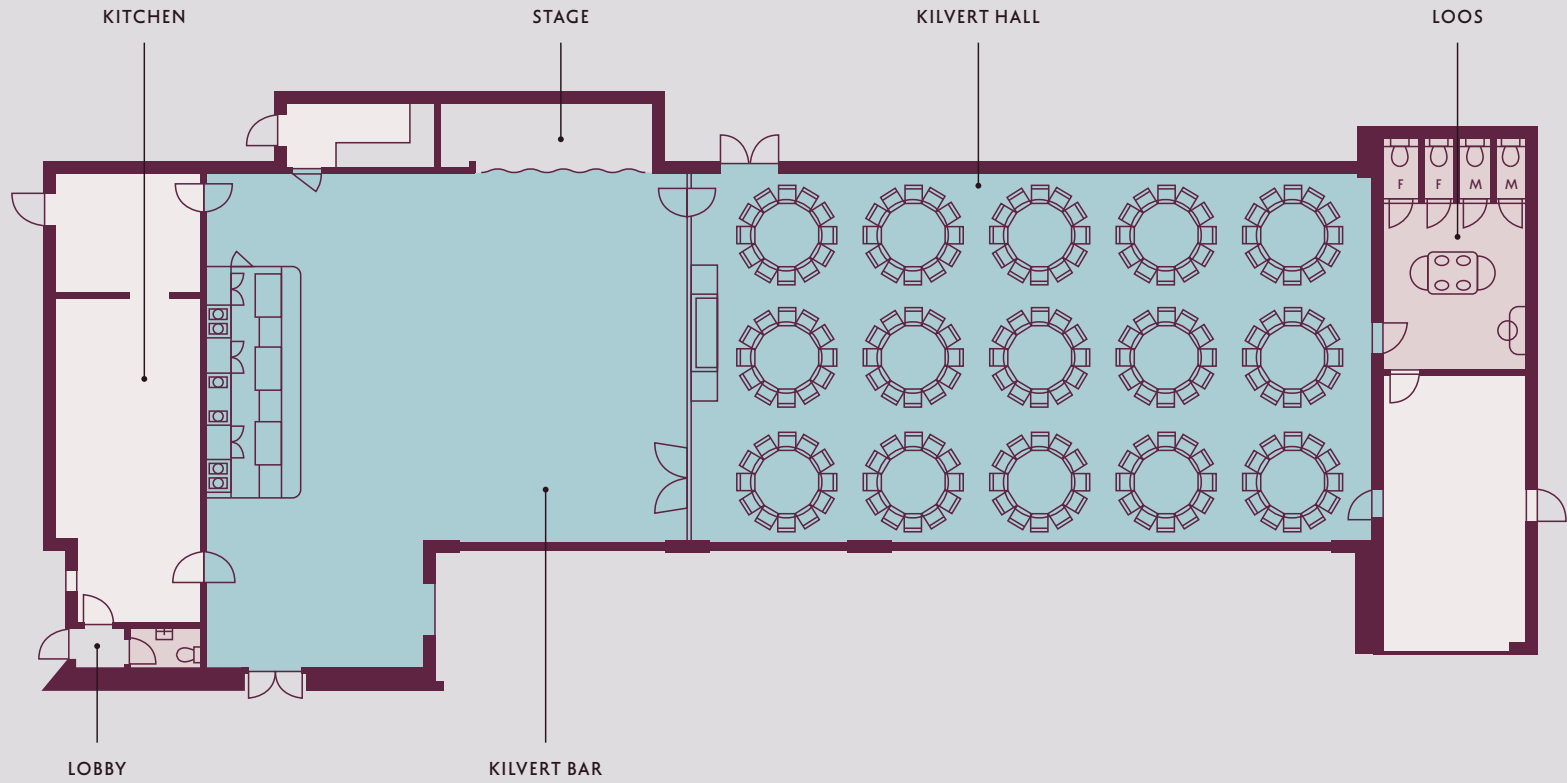
12 SEATED



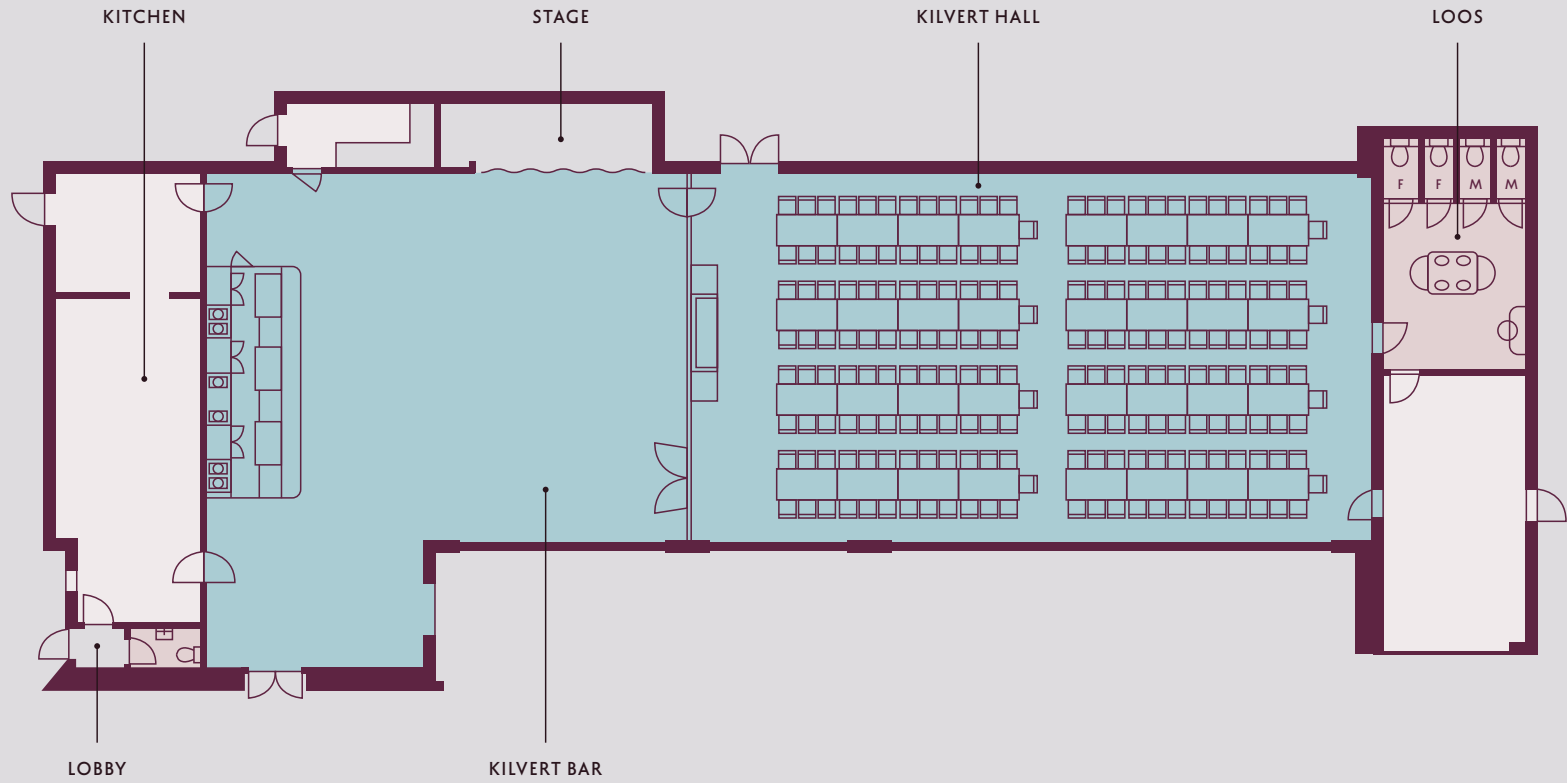
24 THEATRE-STYLE



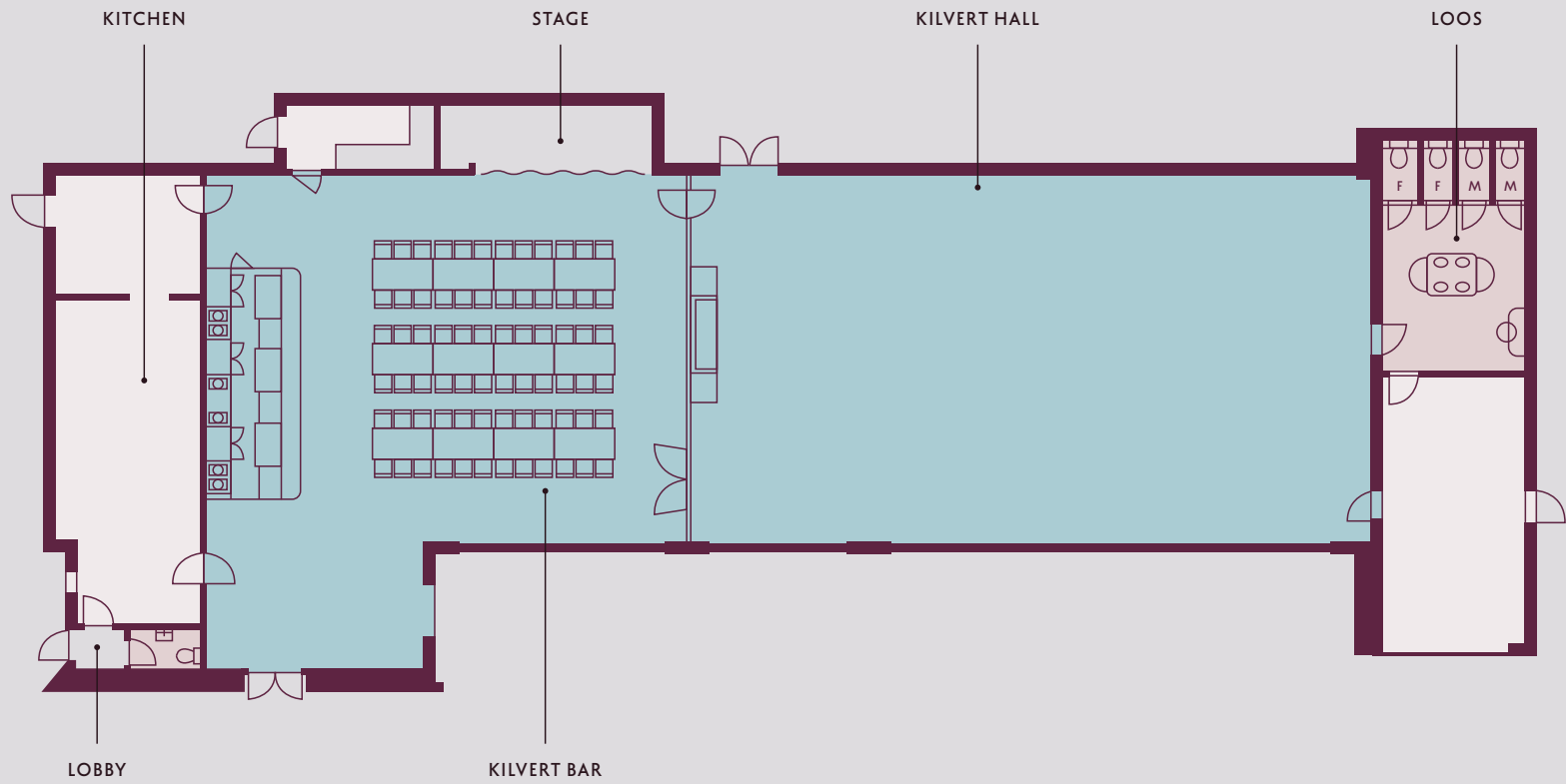
KILVERT HALL — 180 SEATED (ROUND TABLES)



KILVERT HALL — 200 SEATED (LONG TABLES)

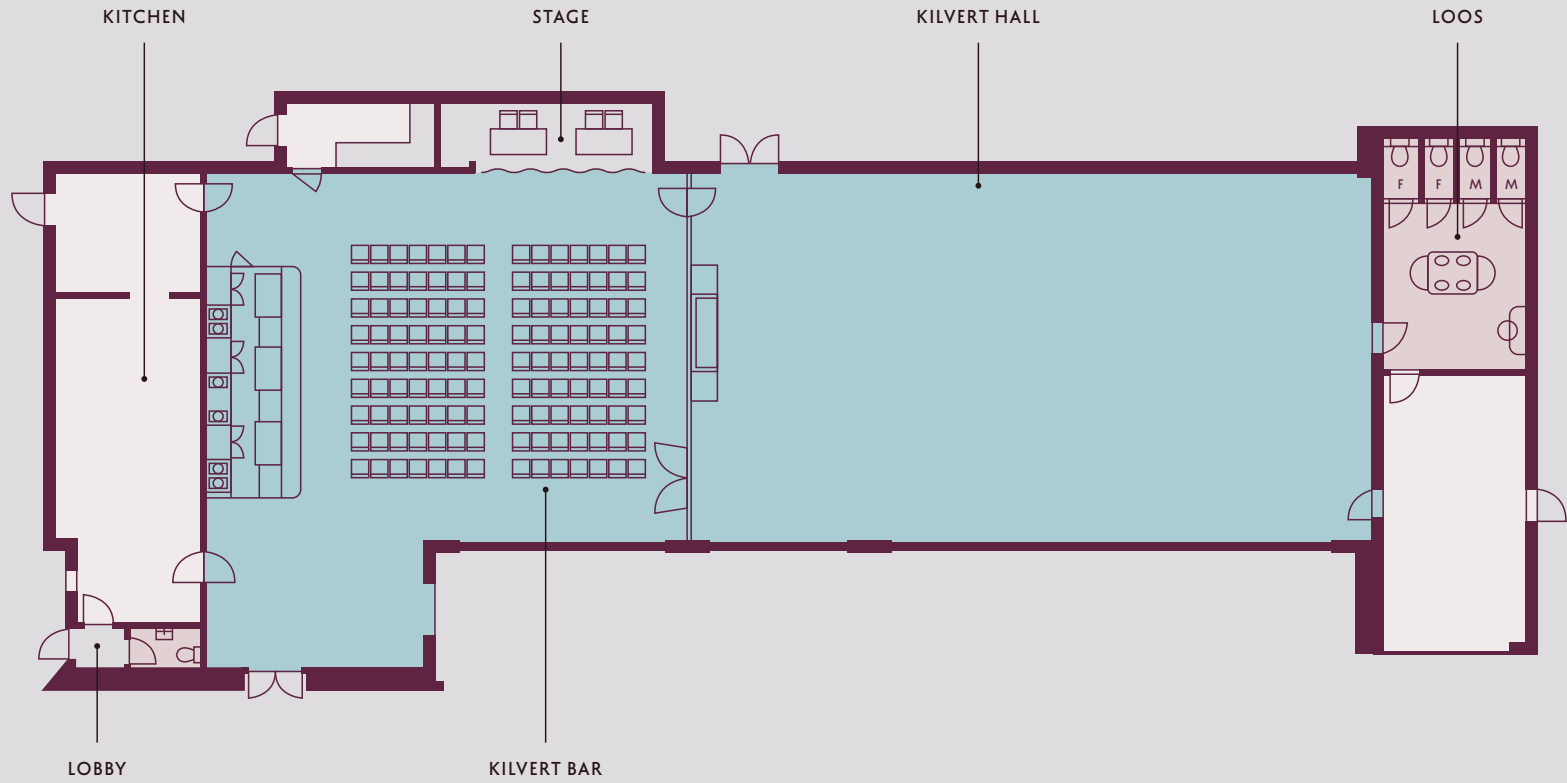


KILVERT BAR — 60 SEATED





KILVERT BAR — 126 SEATED (THEATRE-STYLE)



## ROOM SPECIFICATIONS

ROOM	DINING	STANDING	THEATRE	AV CAPABILITY
FITZ BAR	-	50*	-	-
DRAWING ROOM	-	50**	-	-
STUDY	12	-	24	YES
HEARTH ROOM	36	100	80	YES
KILVERT BAR	60	200	126	YES
KILVERT HALL	200***	400	200	YES
GARDEN HOUSE	80	200	200	-

\* 100 when combined with Drawing Room

\*\* 100 with Fitz Bar

\*\*\* 200 on long tables, 180 on round tables